



Welcome
East Sussex Better Together Alliance



Agenda

- Welcome and introductions
- About East Sussex Better Together (ESBT)
- Background, our challenges and our successes
- What next?
 - A new model of accountable care
- Next steps
- Questions and answers
- How to stay involved





East Sussex Better Together

Our ambition

- East Sussex Better Together is our bold and transformative approach to developing a **fully integrated health and social care economy in East Sussex**
- Our shared ambition is to make sure every patient and service user receives **proactive, joined up care** that supports them to live as **independently** as possible and achieve the **best possible outcomes**.
- **150 week plan** started in August 2014
- It's about making sure we use our **combined £850 million annual budget** to achieve the best results

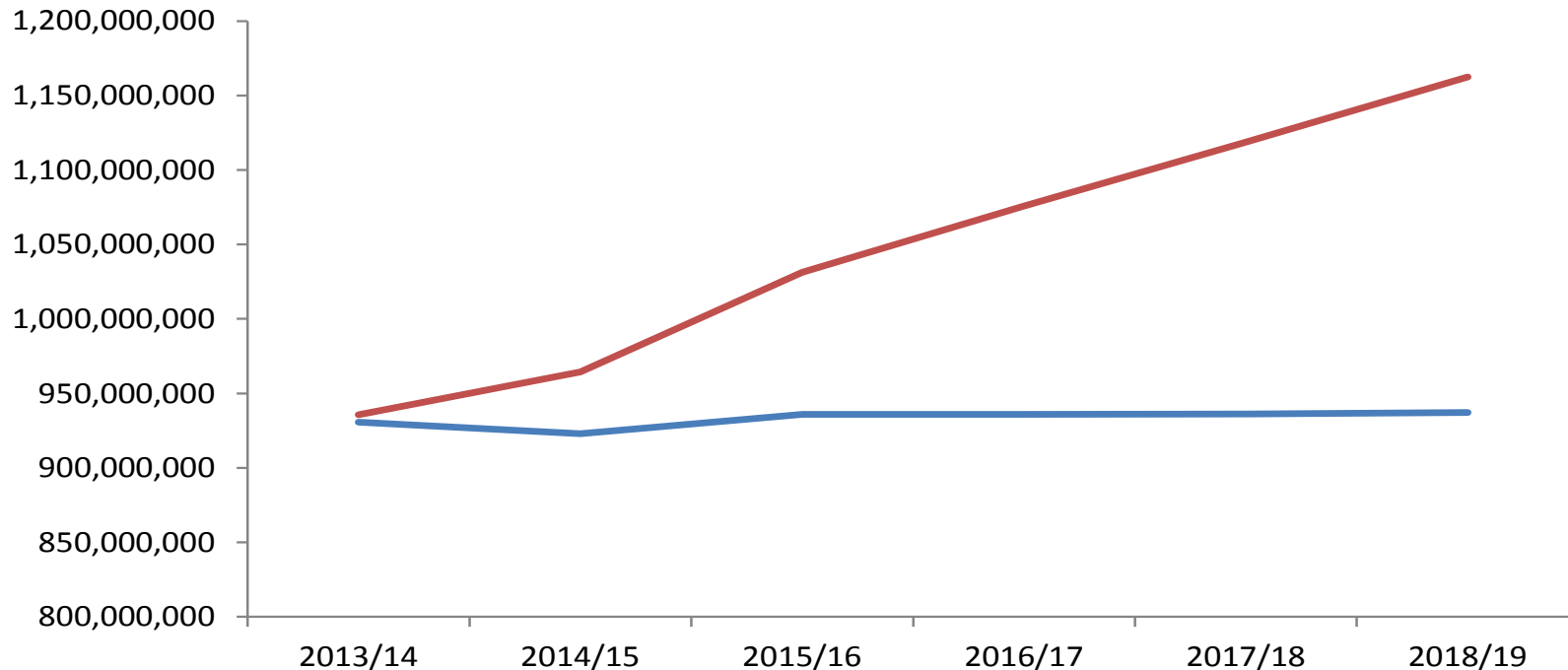




East Sussex Better Together

The case for change

Headline: Year of care costs: £2,189 to £2,800 if we don't change. We need to aim for c.£2,300



— Available resource

— Projection of current care cost plus BCF requirement (Do Nothing scenario)





East Sussex Better Together

Who are we?

- ESBT is **made up of five local partners** Eastbourne, Hailsham and Seaford CCG, Hastings and Rother CCG, East Sussex County Council, East Sussex Healthcare NHS Trust and Sussex Partnership NHS Foundation Trust.
- We also **work closely with local people, local organisations, and other health and care professionals**, including GP practices
- ESBT **brings together** prevention work, primary and community care, social care, mental health, acute and specialist care.





East Sussex Better Together

What are we all working towards?

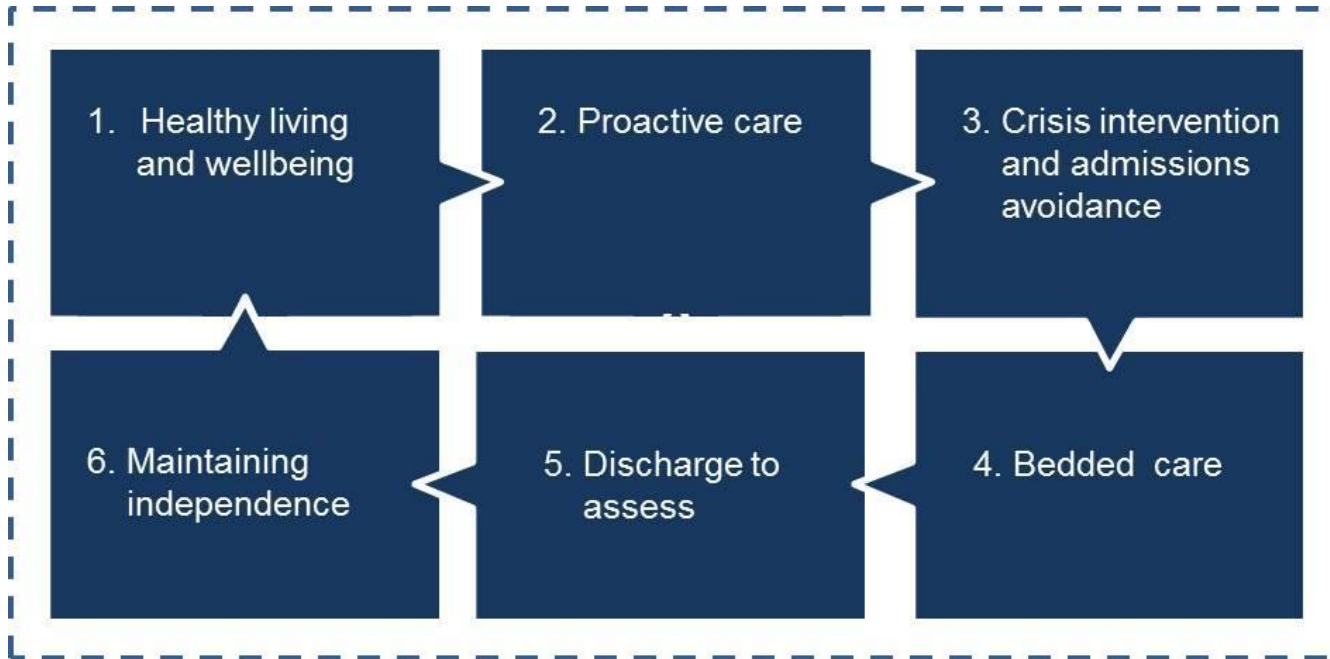
- **Improved health and wellbeing** in our communities with fewer health inequalities
- **Experiences** of using services **will be better**
- **Staff** will be working in a way that really makes the most of their **dedication, skills and professionalism**
- The cost of care will have been made **affordable and sustainable**





East Sussex Better Together

Our 6+2 care model



Prescribing

Elective care



East Sussex Better Together *Achievements and successes*



- **Health and Social Care Connect** – Fully implemented a single point for local people and health professions to access support services
- **Integrated Locality Teams** – Established integrated social and community care teams under a single management structure. Reducing boundaries between NHS and Social Care to develop a single operating process.
- **Community care capacity** – significantly invested a range of services including Frailty Practitioners, Proactive Care teams and Crisis Response – 72hr Nurse led Admission avoidance – team
- **Self-management** – developed a core self management tool to be delivered across the system & invested significantly to improve and extend Telecare home support across health, social care and housing



East Sussex Better Together *Achievements and successes*



And...

- **Urgent Care** – developed an Integrated service model following extensive engagement
- **Children's Services** – Established integrated community 0-5 year child health and care service
- **Mental Health** - Significant service developments and enhancements in services for people with mental health needs E.g. established a new 7 day specialist Community Eating Disorders service and developed an expanded perinatal mental health multidisciplinary
- **Established Link workers in each locality** to strengthen an asset based approach to improve both personal and community resilience at local level





We've achieved a lot, but there is more to do

- Partnerships are stronger than ever
- Investing in community-based services
- Increased coordination and improved integration (HSCC; ILT Managers; new services)
- Everything achieved to date has been through collaboration

But...

... we now need to do more.





Questions?

Shaping East Sussex Better Together



Moving to a new model of accountable care



East Sussex Better Together Alliance

Accountable care

- We're at an important **tipping point between the old and the new**
- Moved into a more formal Alliance (from 1st April 2017). This will help us achieve the **triple aims from the NHS five year forward view**:
 - Improve population health and well-being
 - Improve the quality and experience of people's care
 - Ensure financial sustainability and best use of resources
- Our evidence base tells us that this will best be delivered through the development of a new model of accountable care





East Sussex Better Together Alliance

Accountable care

What is accountable care?

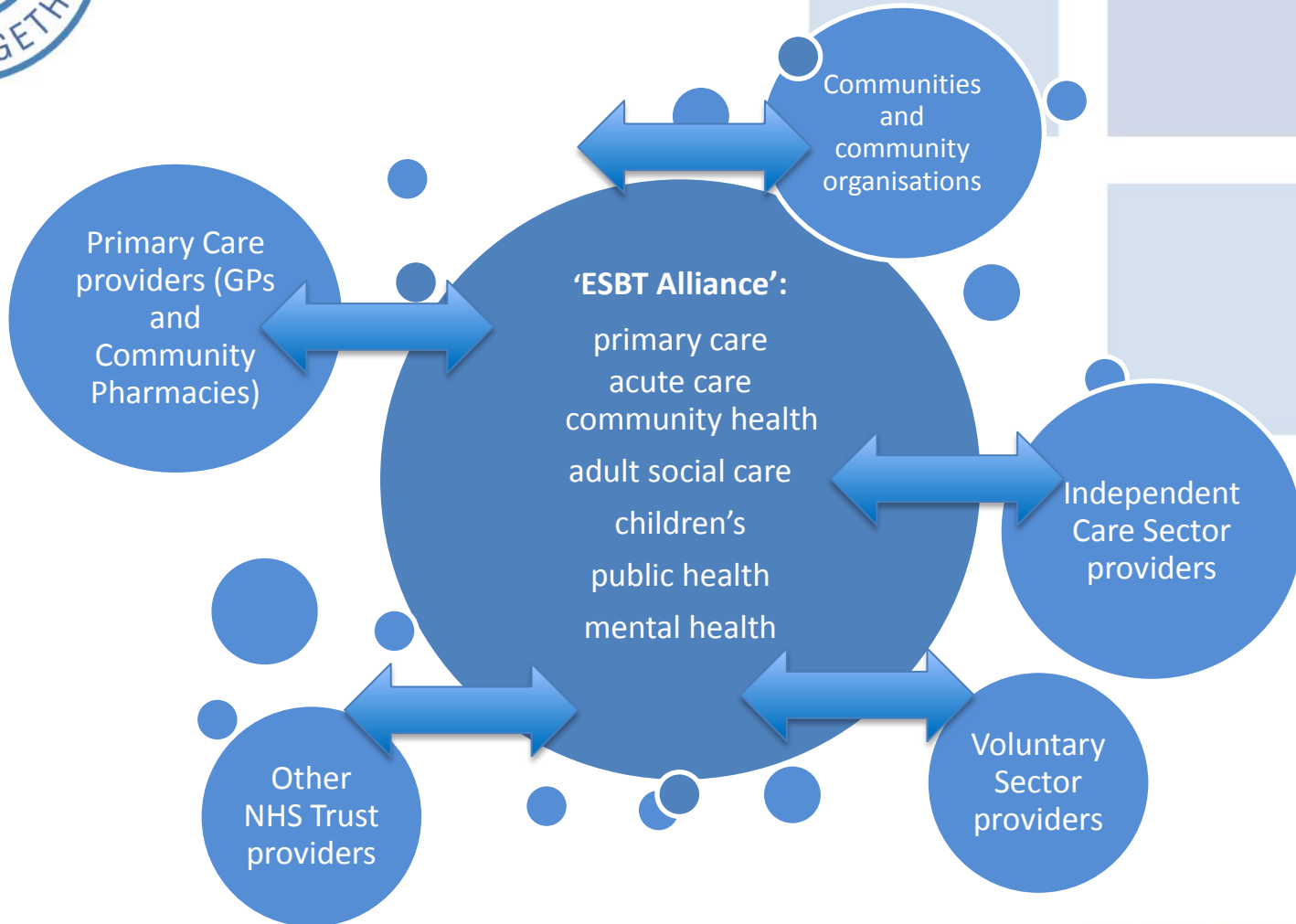
“A system in which a group of providers (or a provider) are held jointly accountable for achieving a set of outcomes for a prospectively defined population over a period of time and for an agreed cost under a contractual arrangement with a commissioner.”





East Sussex Better Together Alliance

Accountable care

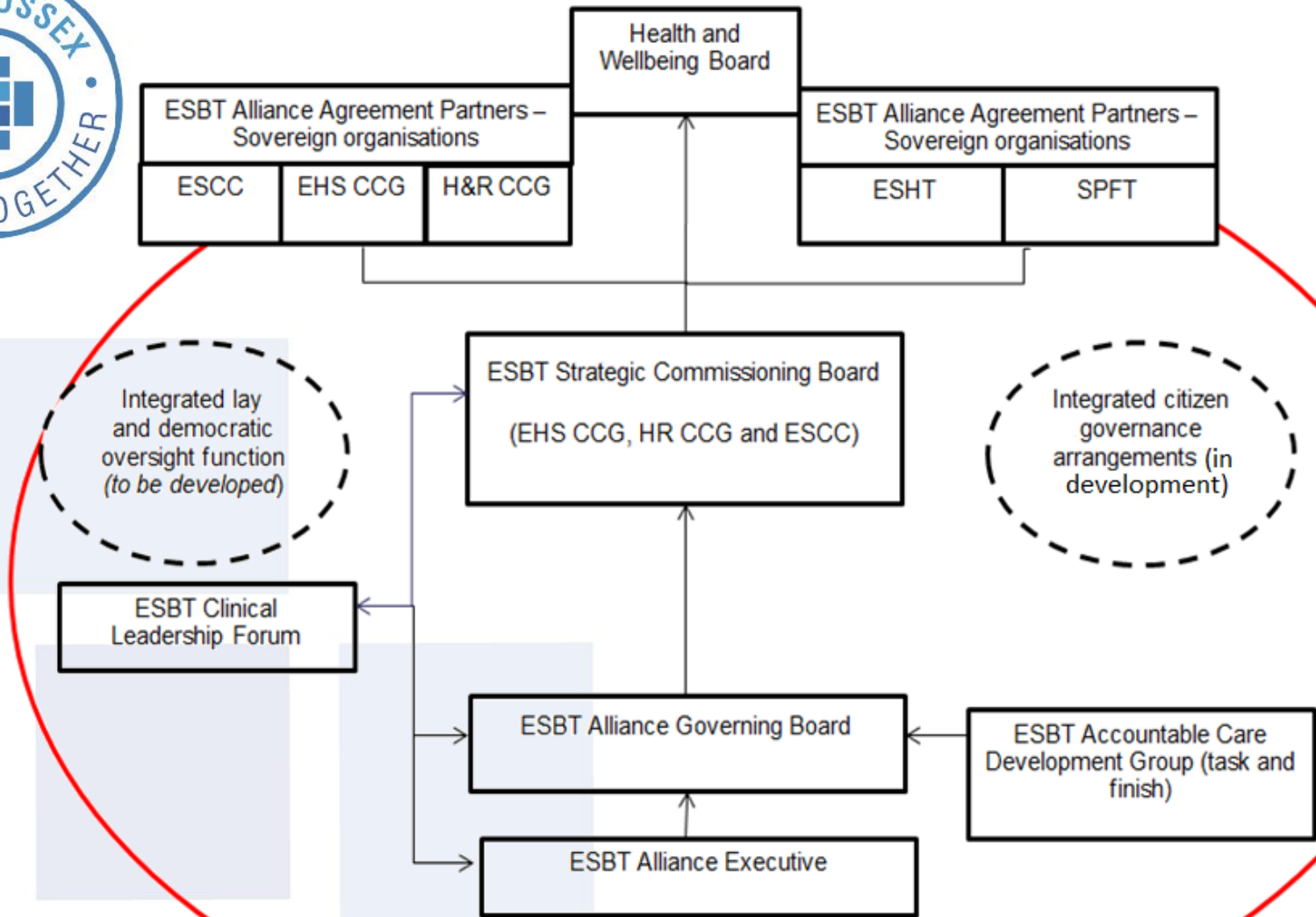




East Sussex Better Together Alliance

Where next?

- To work towards this we have now established the ESBT Alliance and entered into a 'test-bed' period of the *ESBT* Alliance to:
 - **Assess** the best ways of formally working even more closely together
 - **Deliver** the best health and care outcomes for local people
 - **Integrate** our governance arrangements
 - **Test** out what new model of care will deliver the best outcomes for local people





East Sussex Better Together Alliance

Achieving our outcomes

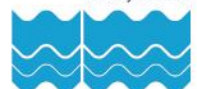




East Sussex Better Together Alliance

Our model of accountable care

- In **July 2017** our organisations' governing bodies will decide on a future delivery model and map implementation
- We don't know what form our entity will take yet:
 - **Prime Provider/Prime Contractor:** One provider acts as 'host' holding the main contract on behalf of other providers. The host can sub contract or provide some services themselves
 - **Provider Collaboration/Contractual Joint Venture:** A number of Alliance orgs could partner in a corporate joint venture/special purpose vehicle (SPV) which holds the main contract
 - **Alliancing: Commissioners and Providers:** The providers remain separate but are bound together by an alliance agreement.
 - **Forms of merger or new organisation:** A new Health and Care Trust is created





East Sussex Better Together Alliance

How will the decision be made?

- In order to decide on the best model, a number of criteria have been developed

Quality and Safety	Clinical and Professional Sustainability	Access and Choice	Deliverability	Financial Sustainability	Transformation	Governance and Accountability
--------------------	--	-------------------	----------------	--------------------------	----------------	-------------------------------

- In June the options will be appraised (by representatives from each of our organisations) based on these criteria
- It is likely a recommendation will be made on the preferred model
- Each sovereign organisation will consider the recommendation in July to develop a consensus on the best option for East Sussex





East Sussex Better Together Alliance

Where do we go from here?

- Challenging and exciting times are ahead for us all – **we don't have all the answers yet but we will keep you involved every step of the way**
- We will **continue to do things differently** in the way we work with our partners and how we design & deliver services
- We want you to **help us shape our new integrated system** so continue to give us your ideas
- If you have any **questions or concerns**, let us know
- We will let you know as soon as we reach our next milestone





East Sussex Better Together Alliance

Next steps

- ✓ 1. ESBT Alliance test-bed year starts – **April 2017**
- ✓ 2. Ongoing Public discussion (incl most recent Shaping Health and Care) – **May 2017**
3. Recommendations on the preferred model (the legal delivery vehicle) to the relevant ESHT, CCG and County Council decision-making bodies – **July 2017**
4. Further sessions with staff to discuss the new model of care – **after July 2017**





Thank you

- You've helped us make our ESBT programme a success through your **commitment to working with different organisations in different ways**
- This means we're now closer than ever before to achieving a **fully integrated and sustainable health and social care system** for local people
- Our **new model of care – the ESBT Alliance** – is the vehicle that will help us cross the 'finishing line' together and complete the transformation we began with ESBT back in August 2014





Questions?

Shaping East Sussex Better Together